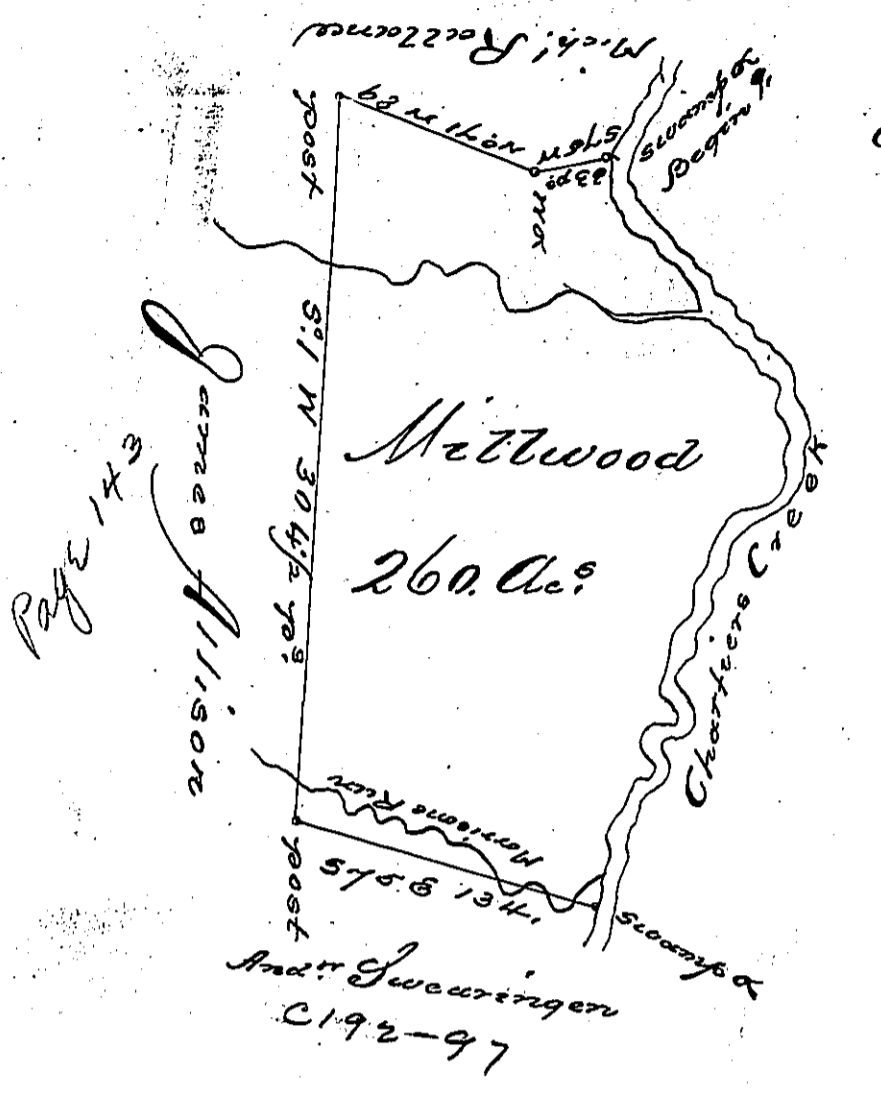


C 10-12



Courses & Dist^{ce} down the Creek.

N ^o 12	E. 25.	Perch ^s
N ^o 3	E. 24.	D ^o
N ^o 51	E. 12.	D ^o
N ^o 44	N. 14.	D ^o
N ^o 42	E. 14.	D ^o
N ^o 62	E. 14.	D ^o
N ^o 46	N. 13.	D ^o
N ^o 20	E. 40.	D ^o
N ^o 16	E. 29.	D ^o
N ^o 48	E. 10.	D ^o
S ^o 67	E. 13.	D ^o
S ^o 55	E. 6.	D ^o
		214
		214
		428
N ^o 35	E. 8	Perch
N ^o 32	N. 32	D ^o
N ^o 7	N. 29	D ^o
N ^o 22	N. 14	D ^o
N ^o 58	N. 18	D ^o
N ^o 27	N. 12	D ^o
S ^o 65	N. 10	D ^o
N ^o 47	N. 11	D ^o
N ^o 56	N. 17	D ^o
N ^o 50	N. 48	D ^o
N ^o 10	N. 21	D ^o
		211
		4 th Beginning

Page 143

The above is a draught of a Tract of Land lying upon the waters of Charleers Creek, Washington County, Called Millwood, Containing Two hundred and sixty acres, Surveyed in pursuance of a Warrant from Philadelphia, dated Oct. 29th 1784, for George Allison, August 12th 1785

Presley Nevill }
Mazz^o Ritchie } J^r

John Lukens Esq
Sur^v. Gen^l

IN TESTIMONY that the above is a copy of the original remaining on file in the Department of Internal Affairs of Pennsylvania, made conformably to an Act of Assembly approved the 16th day of February, 1833, I have hereunto set my Hand and caused the Seal of said Department to be affixed at Harrisburg, this first day of April 1902.

James W. Fatta
Secretary of Internal Affairs.